

 **PHOENIX GOLD**

**FULL CLASS-D TECHNOLOGY
MINI AMPLIFIERS**

ZX
series



Models: ZXM500.1 - ZXM500.4 - ZXM600.3 - ZXM700.5

SPECIFICATIONS

- Full Class-D technology offers efficiency & performance
- Short circuit/thermal and high/low voltage protection
 - Excellent signal to noise ratio and FM noise rejection
 - Remote gain controller included (*except ZXM500.4*)
 - Built in protection LED light status indicator
 - Surface mount component technology
 - Ultra small size for easy installation
 - Autostart on high-level input
 - Full adjustable HP & LP filter

All specifications subject to change without notice.



PHOENIX GOLD

	ZXM500.1	ZXM500.4	ZXM600.3	ZXM700.5
Class:	Class D	Class D	Class D	Class D
Channels:	1	4	3	5
Frequency Response:	12Hz – 280Hz	10Hz – 30kHz	L/R: 20Hz – 25kHz Sub: 10Hz – 250Hz	F/R: 20Hz – 25kHz Sub: 10Hz – 260Hz
Max Power Rating:	1000W	1000W	1200W	1400W
RMS Power Rating (1Ω):	1 x 500W	N/A	N/A	N/A
RMS Power Rating (2Ω):	1 x 360W	4 x 125W	2 x 130W + 1 x 350W	4 x 100W + 1 x 350W
RMS Power Rating (4Ω):	1 x 230W	4 x 80W 2 x 250W Bridged	2 x 75W + 1 x 230W	4 x 60W + 1 x 230W
Signal to Noise Ratio (SNR) (Full Power):	-88dB	-90dB	L/R: -86dB Sub: -91dB	F/R: -84dB Sub: -89dB
Total Harmonic Distortion (THD):	<1%	<1%	<1%	<1%
Low Pass Filter (LPF):	40Hz – 250Hz (12dB/Oct)	40Hz – 400Hz (12dB/Oct)	L/R: 40Hz – 400Hz (12dB/Oct) Sub: 50Hz – 250Hz (24dB/Oct)	F/R: 40Hz – 400Hz (12dB/Oct) Sub: 50Hz – 250Hz (24dB/Oct)
High Pass Filter (HPF):	Sub: 50Hz – 250Hz (24dB/Oct)	F/R: 40Hz – 400Hz (12dB/Oct)	40Hz – 400Hz (12dB/Oct)	40Hz – 400Hz (12dB/Oct)
Subsonic:	Sub: 50Hz – 250Hz (24dB/Oct)	N/A	N/A	N/A
Bass Boost @ 45Hz:	0 – +18dB	N/A	Sub: 0 – +18dB	Sub: 0 – +18dB
Crosstalk:	N/A		-48dB	-50dB
Input Sensitivity:	0.34V – 7.1V	0.34V – 5.7V	0.36V – 6.8V	0.34V – 8V
Remote:	Yes (Included)	N/A	Yes (Included)	Yes (Included)
High-level Input:	Yes	Yes	Yes	Yes
Auto Turn-on:	Yes	Yes	Yes	Yes
Input Mode:	N/A	2CH / 4CH	2CH / 3CH	4CH / 5CH
Operating Voltage:	7V – 16.5V	7V – 16.5V	8.5V – 16.8V	8.6V – 16.6V
Idle Current:	0.51A	0.72A	0.88A	1.24A
Current Draw (Max):	46A	46A	56A	70A
Total Efficiency (4Ω):	92%	90%	88%	85%
Power Terminal:	10mm ²	10mm ²	10mm ²	10mm ²
Speaker Terminal:	10mm ²	1mm ²	1mm ²	1mm ²
Dimensions (LxWxH) (Excluding Feet):	149 x 83.1 x 34.8mm	149 x 83.1 x 34.8mm	149 x 83.1 x 34.8mm	186 x 83.1 x 37.3mm
Dimensions (LxWxH) (Including Feet):	165 x 83.1 x 34.8mm	165 x 83.1 x 34.8mm	165 x 83.1 x 34.8mm	202 x 83.1 x 37.3mm

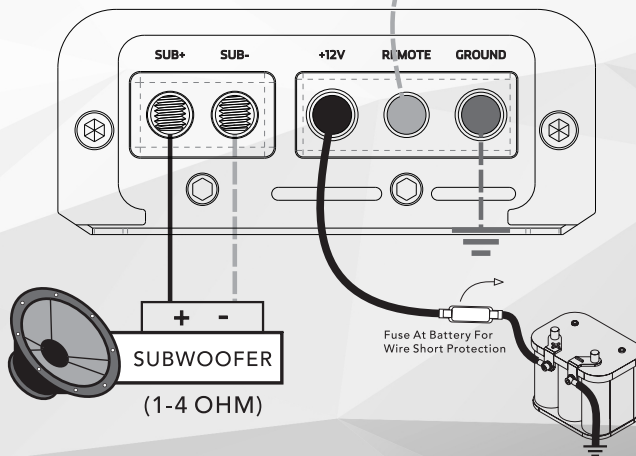
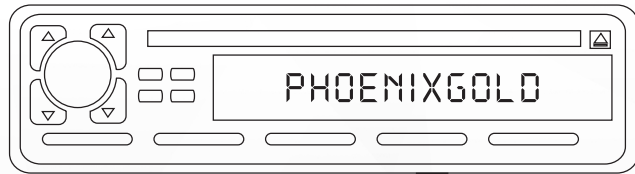
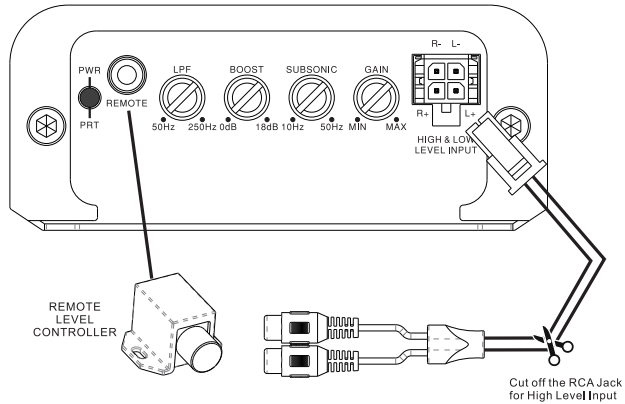
Installation

Make sure the enclosure is firmly fixed in your vehicle. Check before drilling or cutting holes; DO NOT work near fuel tanks, fuel lines hydraulic lines or electrical wiring. Amplifiers are generally mounted in the hatch/trunk area of a car or SUV, and under or behind the seat of most trucks. Select a location that will provide adequate ventilation for the amplifier. Secure the amplifier with the screws provided. **DO NOT** mount the amplifier in such a way as to pinch or damage the wires.

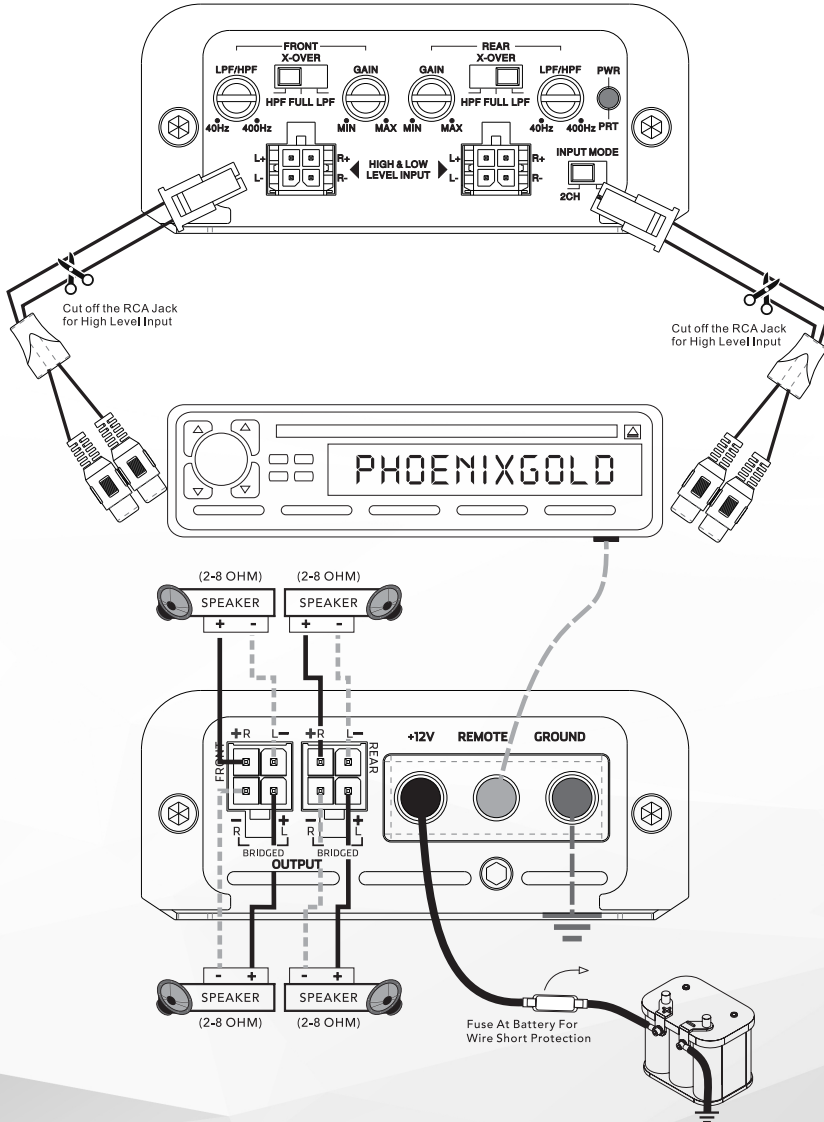
- Before you start, disconnect the car battery's negative cable and ensure it is isolated during the installation.
- Run an appropriate gauge wire from the battery to the amplifier. Ensure that the wire being used is good quality as this cable will carry a very high current.
- Find the closest clear metal area to the amp for a ground. Sand, grind or scrape all paint and undercoating from the body and screw the ground securely in place. Test the ground with an ohm meter if desired.
- Decide where you are ideally going to mount the amp. Once placed, run the speaker wire to the speakers. Make sure the polarity (+ and -) are correctly installed.
- Connect the power and ground to the amplifier.
- Connect the power wire to the battery using a fuse capable of the total current load of all amplifiers connected. Locate the fuse as close as possible to the battery.
- Connect the remote wire from the head unit to the amplifier.
- Connect the RCA's to the amplifier.
- When everything is connected, power on the unit and leave the gain all the way down at first. Start with the head unit volume low and work your way up.
- Now you can tune the amp. Take your time and make only one adjustment at a time. It may take some time to get the system fully adjusted. During this time, the amp is drawing current from the battery. You should check the battery voltage from time to time and re-charge it if it gets low.

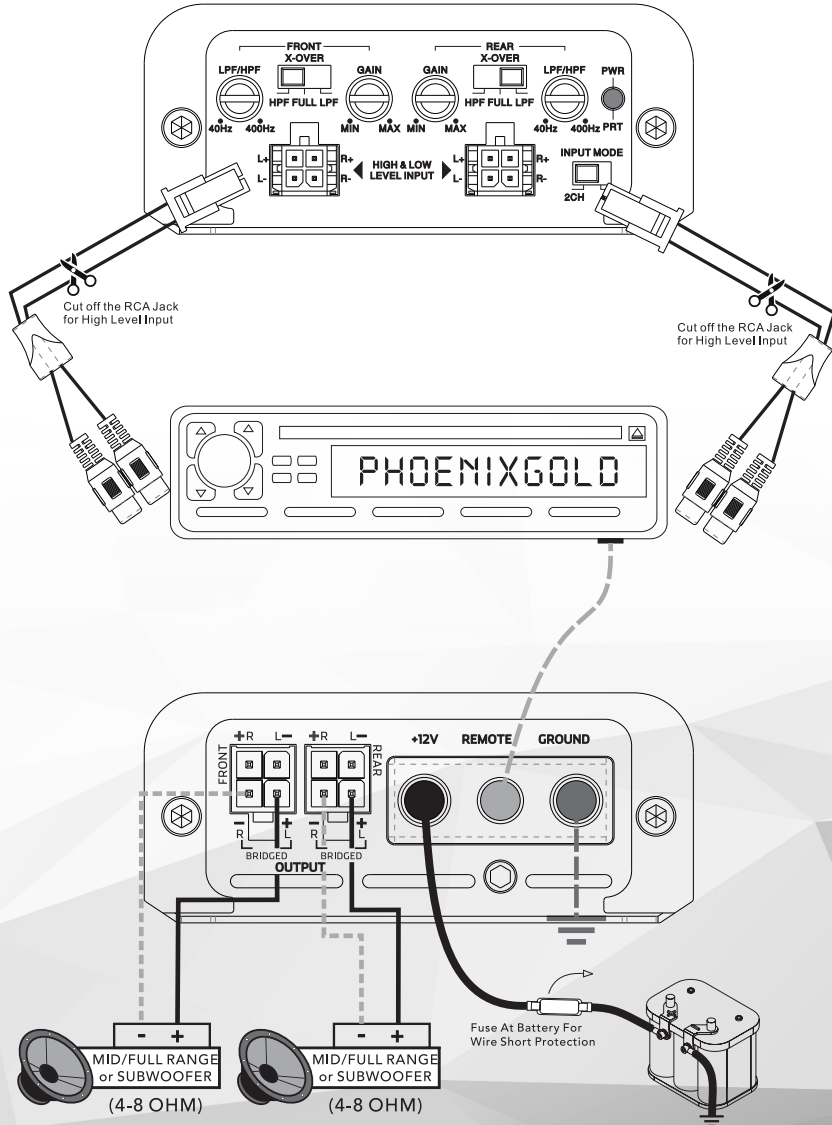
ZXM AMPLIFIERS - Connection Diagrams

ZXM500.1 Install

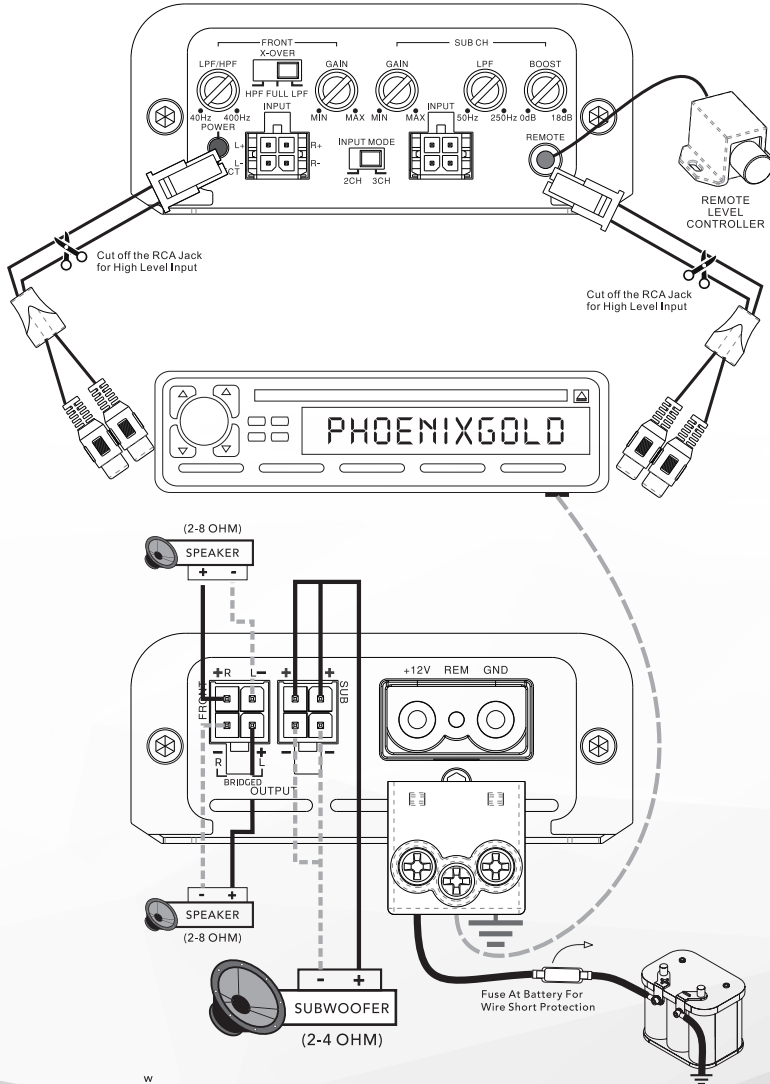


ZXM500.4 Install - NORMAL

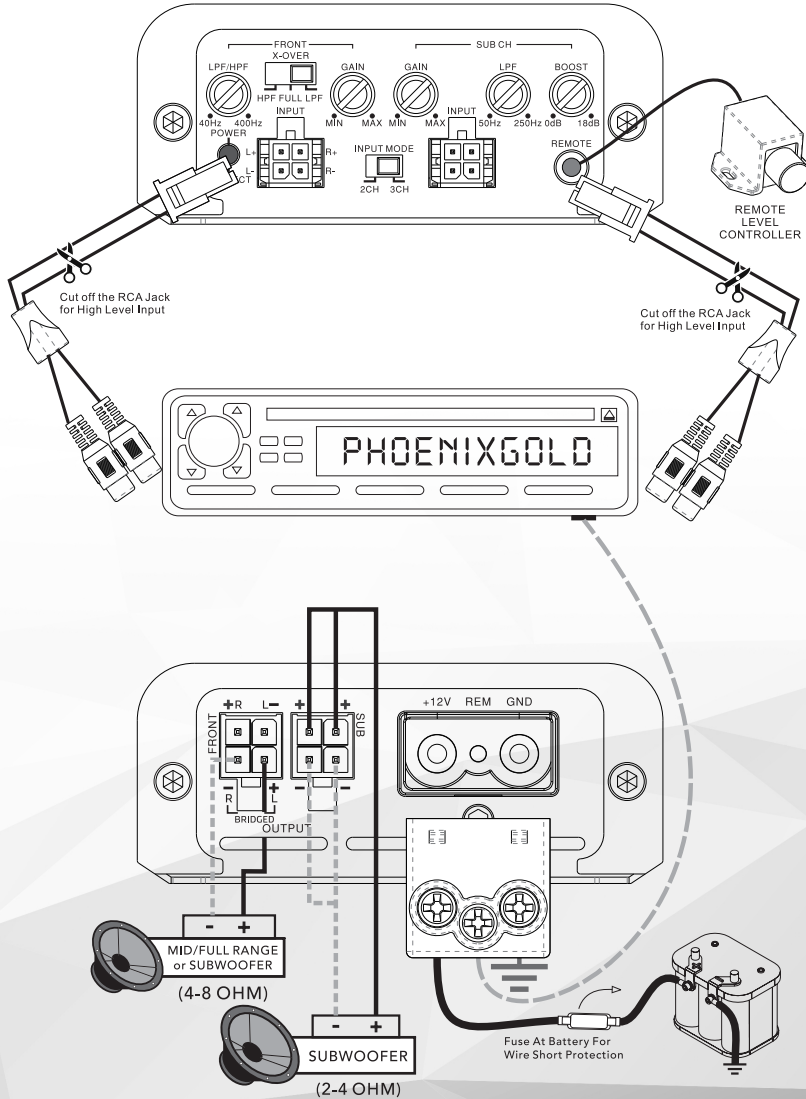


ZXM AMPLIFIERS - Connection Diagrams
ZXM500.4 Install - BRIDGED


ZXM600.3 Install - NORMAL



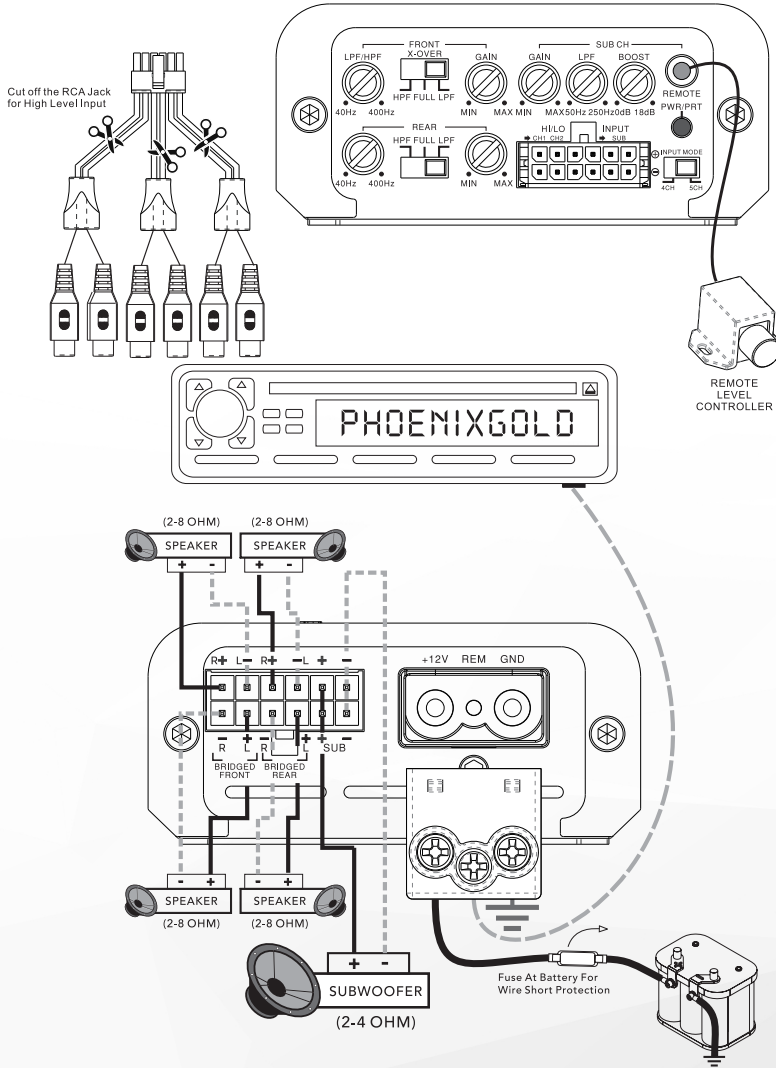
w

ZXM AMPLIFIERS - Connection Diagrams
ZXM600.3 Install - BRIDGED




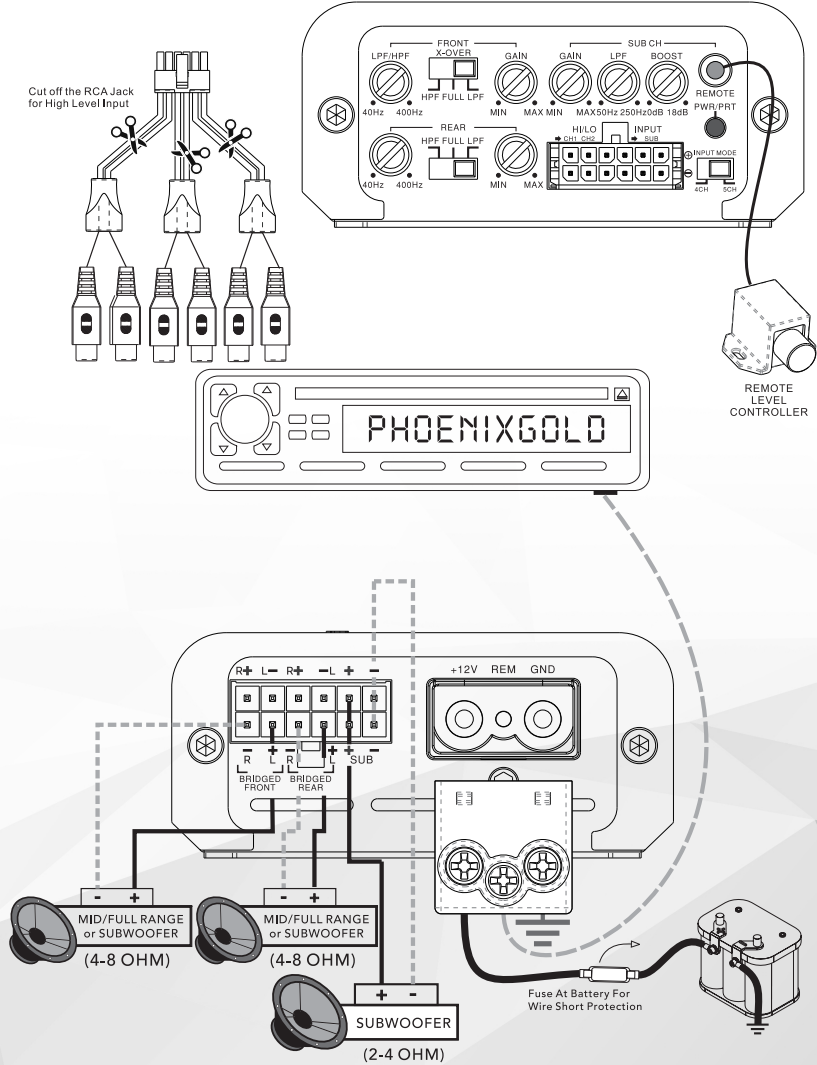
ZXM AMPLIFIERS - Connection Diagrams

ZXM700.5 Install - NORMAL



ZXM AMPLIFIERS - Connection Diagrams

ZXM700.5 Install - BRIDGED



PHOENIX GOLD

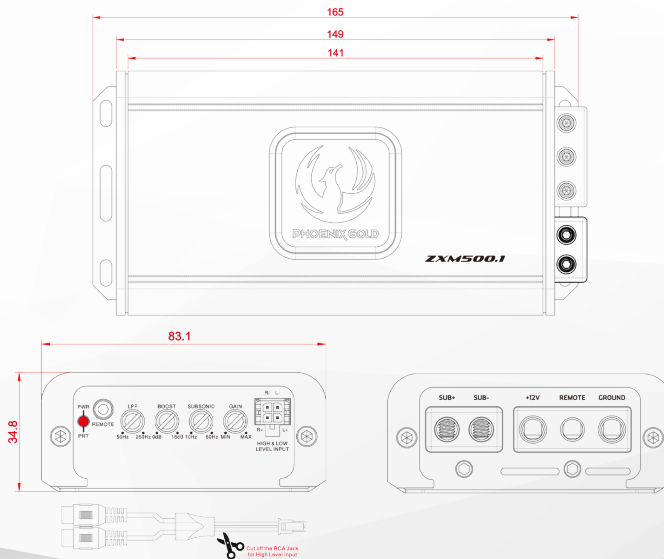
Connection - Cable Information

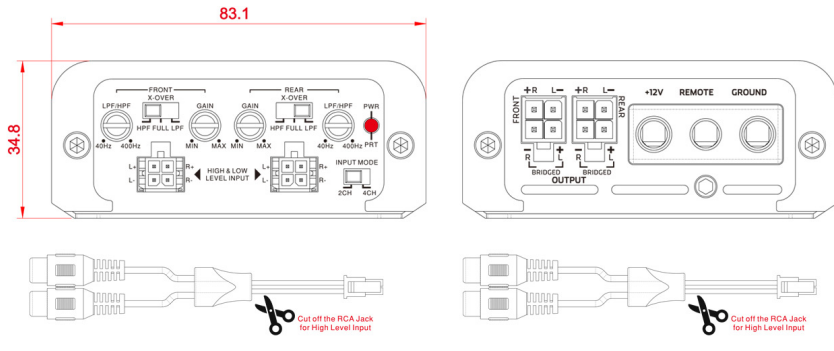
Ensure the audio system is turned off before making any connections to the amplifier, speakers, or source unit. Failure to do so could result in permanent damage to the audio system. Ensure the correct gauge cable is used for all connections; consult the cable calculator diagram below for the correct gauge cable for your installation.

TOTAL AMPS	CABLE LENGTH															
	0-1 Metre / 0-4 Feet		1-2 Metre / 4-7 Feet		2-3 Metre / 7-10 Feet		3-4 Metre / 10-13 Feet		4-5 Metre / 13-16 Feet		5-6 Metre / 16-19 Feet		6-7 Metre / 19-22 Feet		7-9 Metre / 22-28 Feet	
	MM2	AWG	MM2	AWG	MM2	AWG	MM2	AWG	MM2	AWG	MM2	AWG	MM2	AWG	MM2	AWG
0-20A	4	12	4	12	4	12	4	12	6	10	6	10	6	10	10	8
20-35A	4	12	6	10	6	10	6	10	6	10	10	8	10	8	20	4
35-50A	6	10	6	10	6	10	10	8	10	8	10	8	20	4	20	4
50-65A	10	8	10	8	10	8	10	8	20	4	20	4	20	4	20	4
65-85A	10	8	10	8	10	8	20	4	20	4	20	4	20	4	35	2
85-105A	10	8	10	8	20	4	20	4	20	4	20	4	20	4	35	2
105-125A	20	4	20	4	20	4	20	4	20	4	20	4	35	2	35	2
125-150A	20	4	20	4	20	4	20	4	35	2	35	2	35	2	50	0
150-200A	20	4	20	4	20	4	35	2	35	2	50	0	50	0	50	0
200-250A	35	2	35	2	35	2	50	0	50	0	50	0	50	0	70	2/0
250-300A	50	0	50	0	50	0	50	0	50	0	50	0	70	2/0	70	2/0

If aluminium wire is used, it is recommended to increase the size of the gauges to compensate. The calculation of cable gauge size considers the resistance of terminal connections.

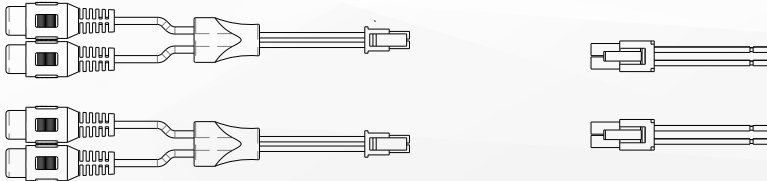
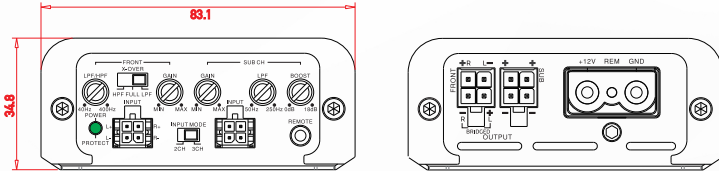
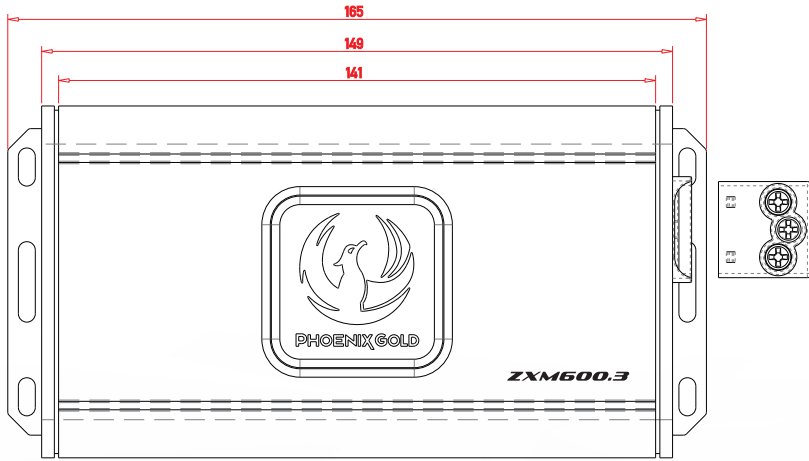
ZXM500.1 - Line Diagram



ZXM500.4 - Line Diagram


PHOENIX GOLD

ZXM600.3 - Line Diagram





Disclaimer

Always ensure the enclosure is securely attached, to avoid movement. PHOENIX GOLD accepts no responsibility for damage or injury in relation to inappropriate securing of this product.

Phoenix Gold Product Warranty

LIMITED WARRANTY ON AMPLIFIERS

Phoenix Gold warrants this product to be free of defects in materials and workmanship for a period of one (1) years from the original date of purchase. This warranty is not transferable and applies only to the original purchaser from an authorized Phoenix Gold dealer. Should service be necessary under this warranty for any reason due to manufacturing defect or malfunction, Phoenix Gold or it's Country distributor / reseller will (at its discretion) repair or replace the defective product with new or re-manufactured product at no charge. Damage caused by the following is not covered under warranty: accident, misuse, abuse, product modification or neglect, failure to follow installation instructions, unauthorized repair attempts, misrepresentations by the seller. This warranty does not cover incidental or consequential damages and does not cover the cost of removing or reinstalling the unit(s). Cosmetic damage due to accident or normal wear and tear is not covered under warranty.