



# Connects2Vision

## User Manual CAM-FT6

**Wide-angle brake light camera for Fiat**  
Includes 5 different viewing angles with wireless controller.

---

### **PRODUCT INFORMATION:**

The CAM-FT6 is a wide-angle brake light camera, suitable for the Fiat Ducato. This camera utilises several camera views to assist the driver in manoeuvres including: Birds eye, wide angle, reversing, blind spots and standard driving mode.

#### **Vehicle compatibility:**

*Fiat Ducato (X250) 2006 - 2014*

*Fiat Ducato (X290) 2014 - 2021*

---

### **PRODUCT FEATURES:**

Image Sensor: 1/4"

TV Lines: 480

Resolution: 720 x 480

Minimum Illumination: 0.1 Lux

TV System: NTSC

Waterproof Rating: IP67

Viewing Angle: 210 Degrees (Horizontal) 140 Degrees (Vertical)

Parking Lines: Yes (Removable)

Image Adjustment: Yes (up to 5 different viewing modes)

Enhanced Performance In Low Light: Yes

Operating Voltage: 12-24V DC (Negative Ground)

Operating Temperature: -20 Degrees C to +75 Degrees C

---

### **DISCLAIMER:**

#### **Prior to Installation**

Read the manual prior to installation. Technical knowledge is necessary for installation. The place of installation must be free of moisture and away from heat sources. Please ensure you use the correct tools to avoid damage to the vehicle or product.

**Connects2 can not be held responsible for the installation of this product.**

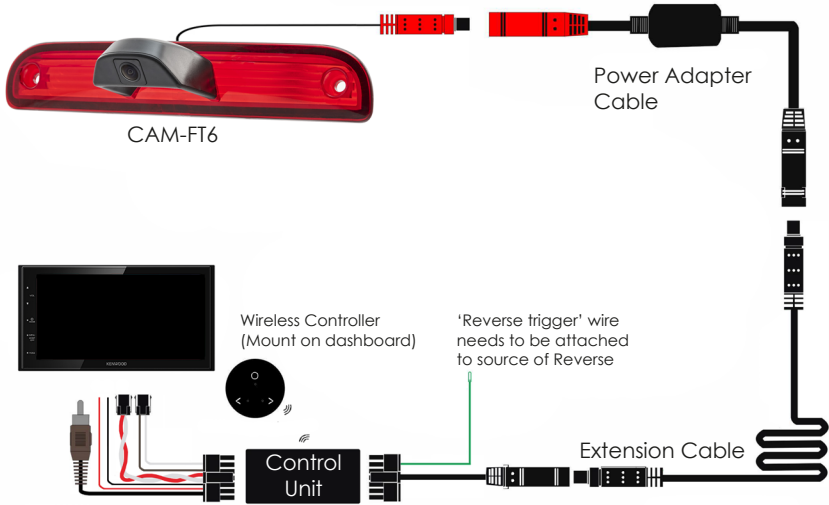
#### **Technical Support**

Connects2 want to provide a fast and suitable resolution should you encounter any technical issues. With this in mind, when contacting Connects2, try to provide as much Information as possible. This will speed up the process and help us to help you.

**Please use our dedicated online technical support centre: [support.connects2.com](http://support.connects2.com)**

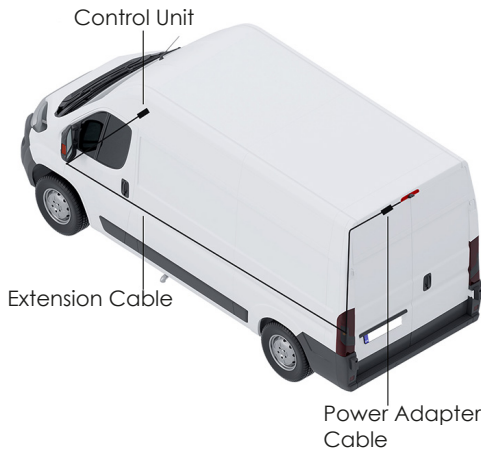
**[www.c2vision-eu.com](http://www.c2vision-eu.com)**

Wiring Diagram

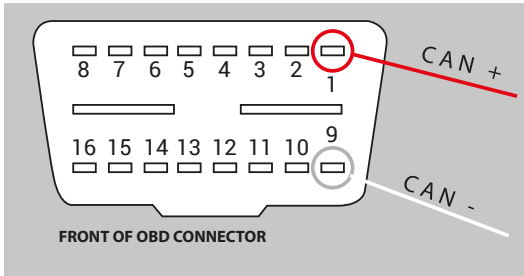


<b>Red</b>	Acc 12V	Connect to vehicle 12V Accessory feed
<b>Black</b>	Ground	Connect to source of ground
<b>Brown/White</b>	N/A	N/A (wire not needed)
<b>Red (Twisted)</b>	CAN +	Connect to rear of OBD (see diagram on Page 3)
<b>White (Twisted)</b>	CAN -	Connect to rear of OBD (see diagram on Page 3)
<b>Brown RCA</b>	Video In	Connect to head unit's video input connection

Vehicle Connection Overview



Connecting CAN-Bus Wiring



Locate the vehicle's OBD port and unscrew/remove the female connector.

On the reverse of the connector (the side where wiring enters it), connect the CAN + (red) and CAN - (white) wires from the harness to the locations specified in the diagram (Pins 1 and 9).

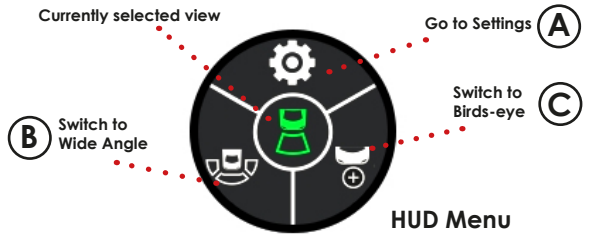
USING THE WIRELESS CONTROLLER

Start-Up

The wireless controller included in the kit can be used to change the viewing mode of the camera, as well as adjust key parameters for each viewing mode.

To bring up the HUD menu, put the vehicle into reverse gear and press **A**.

*Note: The HUD menu will time-out after 3 seconds to allow an uninhibited view of the camera image. Press the **A** button to bring the HUD menu back onto the screen.*



The currently selected viewing mode is displayed by the icon in the centre of the HUD menu. This will default to Driving/Rear-View mode, or to Reversing mode when in reverse gear.

To change the camera mode, whilst the vehicle is in reverse gear, press **B** or **C** to cycle through the Reversing, Wide Angle and Birds-Eye viewing modes.

Viewing Modes



**Reversing**  
(Select from HUD Menu)



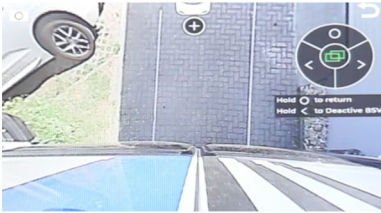
**Driving/Rear-View**  
(Default view when not in reverse)



**Wide Angle**  
(Select from HUD Menu)



**Right Blind Spot**  
(Triggered by Indicator - See Below)



**Birds-Eye**  
(Select from HUD Menu)



**Left Blind Spot**  
(Triggered by Indicator - See Below)

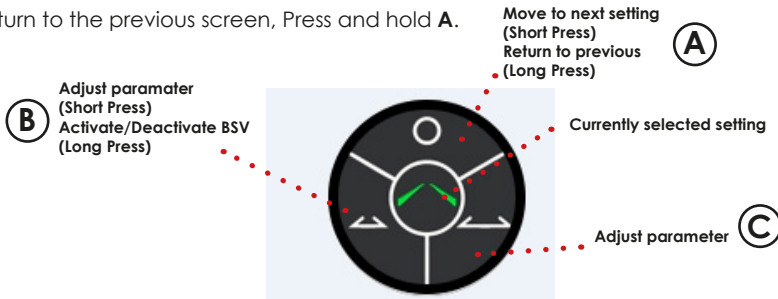
## Adjusting Settings

To adjust settings for all viewing modes, press **A** from the HUD menu to enter the settings menu.

Once in the settings menu, short press **A** to cycle through the various settings screens available. Screens include camera angle and position for each mode, and guideline width for parking lines.

Once in a settings screen, the selected setting is indicated by the icon in the centre of the display. The parameters can be adjusted with **B** and **C**.

To return to the previous screen, Press and hold **A**.



## Activating/Deactivating Blind Spot View (BSV) Mode

When in any of the settings screens, a long press of **B** will activate or deactivate BSV (Blind Spot View).

When active, this will trigger the blind spot camera image when an indicator is activated and the vehicle is moving at a speed of over 40km/h.

When inactive, using the indicators will not trigger the blind spot view and the camera will remain in Driving/Rear-View mode.

*Note: this function will only work if the CAN-Bus wiring is connected.*