

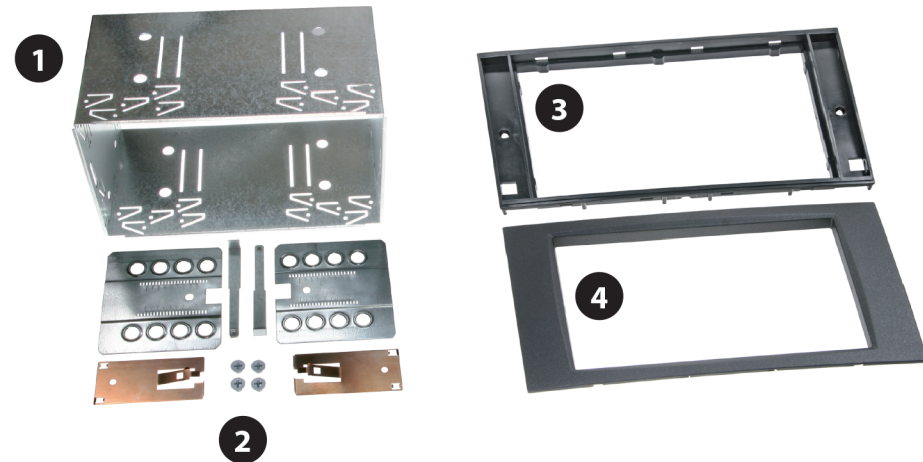


Installation Manual
Double DIN Kit
Part No.: CT23FD01A
Black

Ford Focus 2004 >
Ford Fusion 2005 >
Ford C-Max 2005 >
Ford Fiesta 2006 >
Ford Galaxy 2006 >
Ford S-Max 2006 >

Ford Transit 2006 >
Ford Kuga 2008 >

Compatible with double DIN Navigation



Double DIN Set contents

- (1) Metal Frame
- (2) Installation Kit
- (3) Mounting Frame
- (4) Facia Plate

Ford models with oval shaped 6000CD audio system



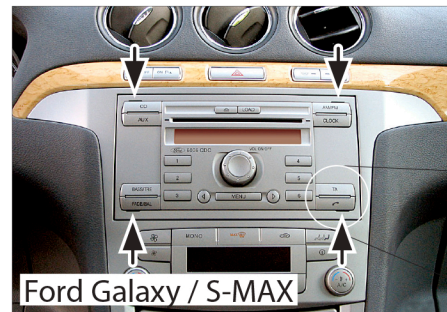
Oval shaped Ford 6000CD system

A new Ford dashboard panel is required if the car was delivered with an oval shaped audio system.



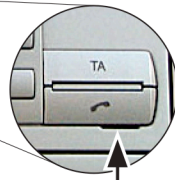
Dashboard Panel sample photo

Ford with other audio systems



Ford Galaxy / S-MAX

1. Insert Ford radio release keys in the holes of the OEM head unit. Remove OEM head unit by pulling it towards your direction.

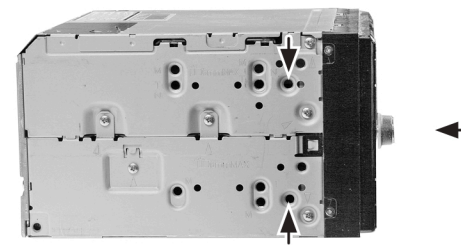


Ford Focus



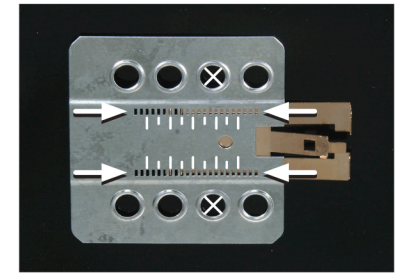
Ford Fiesta

All installation work must be performed by a qualified professional installer only.
The manufacturer / dealer is not liable for any kind of incidental or indirect damages.



(sample photo)

Mount the metal brackets to the double DIN head unit.



(sample photo)

The position of the copper coloured holder can be adjusted to your needs for perfect fit. (see sample)



2. Place the fascia plate on the dashboard.

Push the metal frame into the fascia plate.

Connect all required circuit points and push the double DIN head unit until it snaps in.

Place the trim frame.

Reinstall everything in reverse order to finish installation.