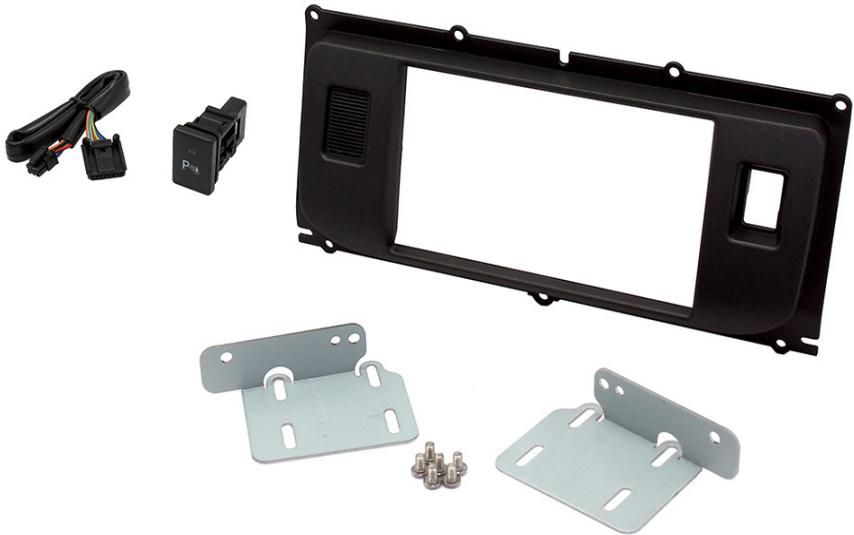




**CT23LR05**  
**Land Rover Double DIN Fitting Kit**



**Application:**  
**Land Rover Evoque 2011- 2018**

**For Vehicles with 5" Display Only**

*[www.connects2.com](http://www.connects2.com)*

Designed and  
Engineered  
in the UK. 

## CT23LR05

Land Rover Double DIN Fitting Kit for Evoque 2011 - 2018 vehicles with 5" Display.  
Includes Parking Switch

### Product Contents

1. Double DIN Fascia Panel
2. Parking Switch and Connection Lead
3. Fitting Accessories

### Prior to installation

Read the manual prior to installation. Technical knowledge is necessary for installation. The place of installation must be free of moisture and away from heat sources. Please ensure you use the correct tools to avoid damage to the vehicle or product.

**Connects2 can not be held responsible for the installation of this product.**

### Technical Support

Connects2 want to provide a fast and suitable resolution should you encounter any technical issues. With this in mind, when contacting Connects2, try to provide as much Information as possible. This will speed up the process and help us to help you.

**Please use our dedicated online technical support centre: [support.connects2.com](http://support.connects2.com)**



Subscribe to our YouTube Channel for installation guides and tips... [www.youtube.com/connects2](http://www.youtube.com/connects2)

## FITTING GUIDE

---

1. Remove the steering column and the steering wheel hood.



2. Remove both side trims on either side of the centre console with a panel removal tool.



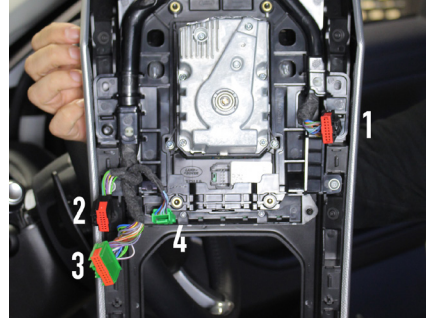
3. There are 2x T-20 screws located underneath the front arch of the centre console. Remove these screws.



4. Prise the panel shown in the image away from the vehicle.



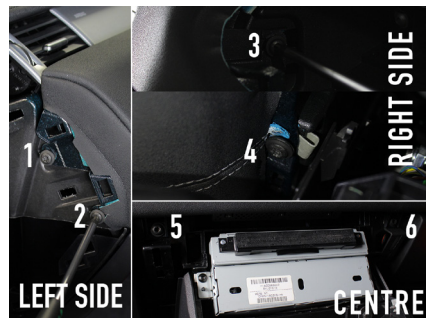
5. Disconnect the 4x connectors shown in the image.



6. Remove the side panel using a panel removal tool.



7. Remove all 6x T-30 screws surrounding the main dashboard.



8. Once the screws have been removed, remove the main dash panel and disconnect the power connector.



## FITTING GUIDE

---

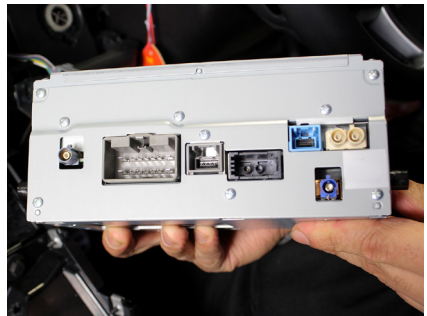
9. Remove the 6x screws surrounding the pre-existing button panel and replace it with the new fascia panel.



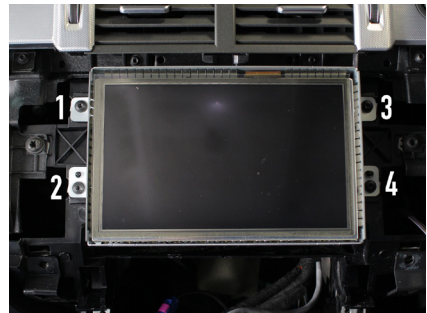
10. Remove the 2x screws on either side of the head unit.



11. Disconnect all wiring from the head unit.



12. Remove all 4x screws surrounding the vehicle display.



13. Disconnect all wiring from the vehicle display.



14. Attach the included brackets to either side of the aftermarket head unit and place into the dash.



15. Attach the parking sensor connection lead to the vehicle's pre-existing parking sensor connection, and fit the new parking sensor button into the aftermarket fascia panel.

16. Re-make all wiring connections to the head unit and reassemble dash in reverse order of disassembly to complete the installation.



